



WHEREVER YOU WANT TO GO
WE'LL GET YOU THERE

Full product catalogue

OUR MISSION

WE HAVE BUILT A GLOBAL REPUTATION ON THE WORLD LEADING PERFORMANCE OF OUR UNIQUE CENTRALIZER TECHNOLOGY

Now, we're on a mission: to build on this leadership through intelligent engineering solutions that **enable safer and more productive access to energy one well at a time.**

Company highlights:

- Operating globally, throughout Europe, the Americas, Asia Pacific and the Middle-East, working with major oil companies
- The largest centralizer manufacturing capacity in the world across 3 manufacturing bases
- Expert, highly trained and dedicated global customer support team
- Engineers work in the field with customers to provide optimum solutions
- Manufacturing and quality control carried out in house with testing through the supply chain and full product traceability
- Well simulations can be provided using our advanced, proprietary software
- Wide range of quality centralizers for all well types



EVERY MINUTE ON A RIG MEANS MONEY

From geothermal to oil & gas, and from land to ultra-deep water, operators are constantly pushing the boundaries of where energy can be found and extracted.

Centek outperforms the competition by finding solutions to maximize efficiency and save time and costs. Centek products create optimized standoff, cementation and flexibility down hole for faster runs and improved cementation results.

SAVE TIME

In today's volatile drilling environment, time is the only thing left to cut. Centek products frequently save hours of rig time by getting to total depth, with no issues.

LOWER RISK

Our centralizers and stop collars are proven to lower the risk of delays, leaks and channeling - providing the centralization needed for a robust cement sheath.

REDUCE COSTS

Reliable, dependable, durable and available when you need it, our extensive range means we have the right centralizer for every casing running scenario.

IMPROVE RESULTS

We've got over 20 years' experience of use in the field with our best-in-class products and a proven track record of value for the money.

OUR PRODUCTS

Our full string product line means we have the right tools for all your wellbore sections, formations and down hole conditions. All from local manufacturing facilities.





OUR PRODUCT RANGE

As sector forerunners we've changed perceptions, standards and quality; set benchmarks and created a new category of centralizers, constantly enhancing our reputation as leaders in our field.

Bringing the best to the business was hard, staying there is tough but being an industry leader is far more rewarding than replicating others. Our aim is to work with our customers to develop new opportunities together.



OSN

OBH

OBH-W

ES

S2

S2-H

TUR

UROS

LEVEL 1 CENTRALIZERS

Our level 1 centralizers are heat treated for strength and have, pressed, welded and non-welded steel bows for optimized stand off in less challenging wells.

They are designed for onshore, vertical and slightly deviated applications where an economic solution is preferred but performance is expected.

All Level 1 bow springs are designed to exceed API 10D



WELL TYPE

ONSHORE

PRODUCT NAME

OSN

Solid with
pressed vanes

OBH

Mechanical
Hinged Bow
Spring
Centralizer

OBH-W

Welded Hinged
Bow Spring
Centralizer

FLEXIBILITY



RUNABILITY



STRENGTH



Excellence to the Core

Centralization and the ease of running casing is often a balance between strength and flexibility which combine to support, what we call, 'runability'. To help with product selection we've added a rating to all our products for flexibility, runability and inherent strength.

LEVEL 1 CENTRALIZERS



OSN

Solid Body Centralizer with Pressed Bows

Made from solid steel with pressed vanes, the OSN functions like a bearing during pipe rotation and helps to reduce torque requirements

- High axial load strength
- Straight and right-hand spiral vane designs available to maximize fluid dynamics
- Steel construction provides superior toughness



FLEXIBILITY



RUNABILITY



STRENGTH

Key Information and ratings

Sizing from 4 1/2" to 13 3/8"

Available with range of high strength stop collars

CSH

Mechanical Hinged Bow Spring

Bow springs are manufactured from high quality alloy steel, hot bent to shape using dies and then heat treated for consistent spring characteristics



Key Information and ratings

Sizing from 4 1/2" to 26"

Stop collar available with same technology



FLEXIBILITY



RUNABILITY



STRENGTH

- 30% lower delivery and storage costs
- Extended profile
- Easy field assembly
- Designed to exceed API 10D

LEVEL 1 CENTRALIZERS



OBH-W

Welded Hinged Bow Spring

The OBH-W hinged centralizer features heat-treated, spring-steel bows which are welded to rigid high strength end bands for optimized standoff in less challenging wells.

- Can be used over casing couplings
- Economic choice / high performance
- Designed to exceed API 10D
- Unique, high strength hinge

Key Information and ratings

Sizing from 4 1/2" to 26"

Available with high performance stop collars



LEVEL 2 PRODUCTS

In 2001 Centek group revolutionized centralizer design and introduced the radically different single piece, slip on, bow spring centralizer. Over the past 20 years we have honed this design to include a range of high performance, slip on, heavy duty and hinged centralizers.

Centek ES and S2 centralizers are robust and high-strength with no weak points but with the flexibility and restoring force to absorb both axial and radial loads. They provide maximum standoff, eliminating cement channelling.

The unique bow spring design allows for flexibility when encountering tight spots with no compromise on performance integrity.

All level Centek 2 bow springs are tested to exceed API 10D.

WELL TYPE

ONSHORE & OFFSHORE

PRODUCT
NAME

FLEXIBILITY

RUNABILITY

STRENGTH

ES

Single Piece,
Slip On, Bow
Spring
Centralizer

S2

Single Piece,
Slip On, Bow
Spring
Centralizer

S2-
HINGED

Hinged, Bow
Spring
Centralizer

S2-HD

Heavy Duty
Single Piece,
Slip On, Bow
Spring
Centralizer



Excellence to the Core

Centralization and the ease of running casing is often a balance between strength and flexibility which combine to support, what we call, 'runability'. To help with product selection we've added a rating to all our products for flexibility, runability and inherent strength.

LEVEL 2 CENTRALIZERS

ES

Single piece, bow spring

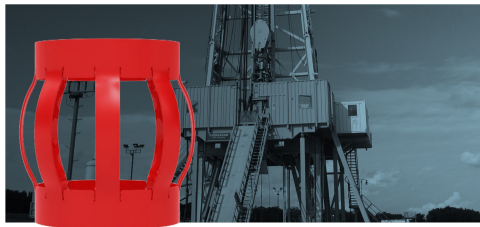
Our latest economical, single-piece solution engineered for most onshore applications. Designed with integrated tabs into the end-band to increase flexibility.

- Good standoff
- High restoring force
- Exceeds API 10D version 7

Key information and ratings

Sizing from 4 1/2" to 14"

Corresponding range of high strength stop collars



S2 CENTRALIZERS



S2

Single piece, bow spring

The patented S2 bow spring centralizer is the premium single piece choice for challenging wellbores. Engineered strength and flexibility optimize RIH saving operators time and money getting to total depth.

- Enhanced rotation and reciprocation during RIH
- Reduced torque and drag
- Supports cementing best practices
- Tested to exceed API 10D

Key Information and ratings

Sizing from 2 7/8" to 24"

Available with high performance stop collars



FLEXIBILITY



RUNABILITY



STRENGTH

S2 HINGED

Hinged, bow spring

The S2 Hinged centralizer is high strength and engineered for challenging applications typically requiring a single piece product. It has a twisted hinge with a one of a kind "one way" hinge pin.

- Tested to exceed API 10D
- Unique high strength hinge and hinge pin design is as strong as a single piece centralizer
- Safe and quick installation
- 30% reduction on cost of transport and storage and lower carbon footprint

Key Information and ratings

Sizing from 5 1/2" to 28"

Available with high performance stop collars



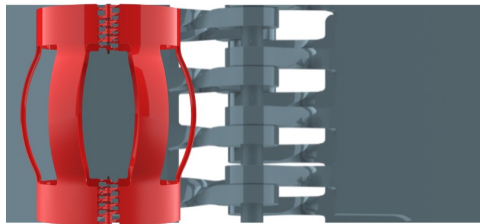
FLEXIBILITY



RUNABILITY



STRENGTH



S2 CENTRALIZERS



S2-HD

Heavy duty, single piece, bow spring

Single piece construction means the S2-HD has no weak points. It is designed for casing running environments with heavy loads where a solid centralizer may be used traditionally.

- Tested to exceed API 10D
- Ultra-high strength
- Reduced torque and drag
- Enhanced rotation and reciprocation during run-in-hole (RIH)

Key Information and ratings

Sizing from 5 1/2" to 14"

Available with high performance stop collars



FLEXIBILITY



RUNABILITY



STRENGTH



LEVEL 3 AND 4 PRODUCTS

Under reamed and close tolerance well sections create several engineering issues which affect run-in-hole (RIH) performance due to the bows being compressed while passing through smaller ID of the previous set casing. Our level 3 and 4 centralizers are developed to perform in the under-reamed sections found in some of the world's most challenging offshore fields, combining high strength with high flexibility.

Our close tolerance and sub centralizers can compress virtually flat to allow travel through narrow under-reamed well sections, providing the optimum solution for even in the most difficult deepwater wells.

WELL TYPE

UNDER-REAMED

DEEPWATER

PRODUCT NAME

TUR

Single Piece,
Bow Spring

UROS

Single Piece,
Bow Spring

TUR-CT

Close Tolerance
Single Piece,
Bow Spring

UROS-CT

Close Tolerance
Single Piece,
Bow Spring

TUR-SUB

Single Piece,
Bow Spring on a
Sub Body

UROS-SUB

Single Piece,
Bow Spring on a
Sub Body

FLEXIBILITY

8

8

8

8

8

8

RUNABILITY

8

8

8

8

8

8

STRENGTH

7

7

7

7

7

7

Excellence to the Core

Centralization and the ease of running casing is often a balance between strength and flexibility which combine to support, what we call, 'runability'. To help with product selection we've added a rating to all our products for flexibility, runability and inherent strength.

UNDER-REAM CENTRALIZERS



UROS

Single Piece, Bow Spring

The UROS centralizer is proven to give good cementation in tight casing and under-ream applications. Large flow by area enhances fluid dynamics.

- Low starting forces
- Reduced running forces - saves time
- Application specific restoring force
- Enhanced fluid dynamics

Key Information and ratings

Sizing from 7" to 17"

Available with high performance stop collars



8
FLEXIBILITY

8
RUNABILITY

7
STRENGTH

TUR

Single Piece, Bow Spring

The TUR bow spring centralizer is designed to be run in under-ream applications found in challenging offshore fields. The TUR centralizer is proven to give good cementation in tight casing and close tolerance applications.



Key Information and ratings

Sizing from 4 1/2" to 16"

Available with high performance stop collars



8
FLEXIBILITY

8
RUNABILITY

7
STRENGTH

- Highly flexible
- Application specific restoring force
- Large flow by area enhances fluid dynamics.

CLOSE TOLERANCE CENTRALIZERS



UROS-CT

Close Tolerance Centralizer

The UROS-CT centralizer is designed to be ultra-flexible to ease the string to TD. It is designed to challenge the traditional and extremely costly Centralizer Sub market.

- Low-profile design provides peak flow-by performance to reduce the surge effect
- Engineered to precise ring-gauge tolerances, because every millimeter saved allows for greater expansion in the open hole

Key Information and ratings

Sizing from 11 3/4" to 17"

Available with high performance stop collars



FLEXIBILITY



RUNABILITY



STRENGTH

TUR-CT

Close Tolerance Centralizer

The TUR-CT is designed with a precisely formed cross bow curvature and has no 'knife edges' to reduce the risk of subsea well head damage on insertion. This also adds additional strength to the bows to support performance in close tolerance applications.

Key Information and ratings

Sizing: 9 3/8" to 11 3/4"

Available with high performance stop collars



FLEXIBILITY

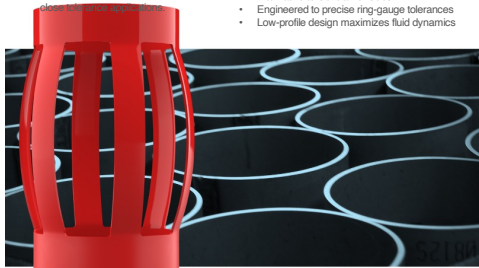


RUNABILITY



STRENGTH

- Alternative to Centralizer Subs
- Engineered to precise ring-gauge tolerances
- Low-profile design maximizes fluid dynamics



CLOSE TOLERANCE CENTRALIZERS



UROS-SUB

Centralizer Sub

The UROS-SUB's single piece centralizer reduces the risk of failure in deepwater applications. This engineered solution enables the centralizer to rotate on the sub body with minimal torque values.

- The sub body is manufactured to API 5CT requirements
- Fewer bows for more efficient RIH
- Interlocked band design gives the strength of a single piece centralizer



FLEXIBILITY



RUNABILITY



STRENGTH

Key Information and ratings

Sizing from 9 5/8" to 17"

TUR-SUB

Centralizer Sub

During operations, the TUR-SUB's centralizer will recess entirely into the sub body enabling it to pass through the tightest of restrictions. The sub body is manufactured to API 5CT requirements.

- Designed specifically for ultra-tight tolerance applications
- Will meet or exceed host casing burst and collapse specifications
- Interlocked band design gives the strength of a single piece centralizer



FLEXIBILITY



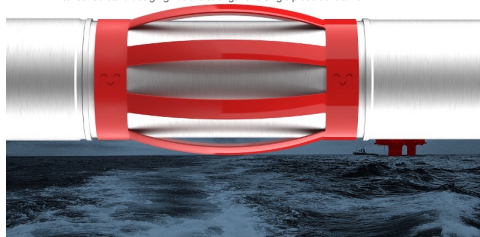
RUNABILITY



STRENGTH

Key Information and ratings

Sizing from 9 5/8" to 17 7/8"



LEVEL 1 AND 2 STOP COLLARS

Our stop collars for less challenging wells with horizontal or vertical sections are available with set screws, spiral nail and draw bolt fitment. These are developed for quick fitment and secure holding forces.

All Centek stop collars are tested to meet the API 10D-2 standard.

WELL TYPE

ONSHORE

PRODUCT
NAME

HSN

Hinged Stop
Collar With Spiral
Nail

OSO

Slip On Stop
Collar

RUNABILITY



STRENGTH



Excellence to the Core

Stop collar performance depends on the ability of the stop collar to hold the centralizer in place. This aids 'runability' and is measured by holding force and integral strength. To help with product selection we've added a rating to all our stop collar products for runability and strength.

LEVEL 1 & 2 STOP COLLARS



HSN

Hinged stop collar with spiral nail

The spiral nail is driven firmly into internal grooves which locks the stop collar against the casing, providing maximum annular clearance, improving installation and reducing rig time

- Economic choice
- Quick installation
- Low profile for low annular clearances
- For use with standard casing grades

Key Information and ratings

Sizing from 4 1/2" to 18 5/8"

Counterparts of Centek's Level 1 centralizers



OSO

Slip on stop collar

OSO slip on stop collars are heat treated for strength and to reduce brittleness. Set screw design provides high holding forces without excessive marring of wellbore tubulars.

- Anti-vibration screw retention
- For use with standard casing grades

Key Information and ratings

Sizing from 3 1/2" to 16"

Counterparts of Centek's Level 2 centralizers



LEVEL 3 AND 4 STOP COLLARS

All Centek premium stop collars are heat treated to improve tensile strength, especially in the critical internal thread area. This is combined with high tensile set screws of a specific thread pitch to match the low-profile characteristics of the product.

All our premium stop collars are fitment tested to up to 50 lb-ft torque, with anti-vibration screw retention and does not require 4" axial slippage to exceed the API 10D-2 performance standard.

WELL TYPE

OFFSHORE

PRODUCT
NAME

00SO

00SH

HDSO

HDSH

Slip On Stop
Collar

Hinged Stop
Collar

Heavy Duty, Slip
On Stop Collar

Heavy Duty,
Hinged Stop
Collar

RUNABILITY

8

8

8

8

STRENGTH

7

7

8

8

Excellence to the Core

Stop collar performance depends on the ability of the stop collar to hold the centralizer in place. This aids 'runability' and is measured by holding force and integral strength. To help with product selection we've added a rating to all our stop collar products for runability and strength.

SLIP ON STOP COLLARS



SOSO

Slip On Stop Collar

Made from the same material as our ultra-high strength centralizers, the SOSO's robust design can withstand high axial forces, making it suitable for demanding well conditions.

- Unique set screw design provides industry leading holding forces without excessive marring of wellbore tubulars.
- Does not require 4" axial slippage to exceed the API 10D-2 performance standard



Key Information and ratings

Sizing from 2 7/8" to 20"

Designed for use in challenging wellbores

HDSO

Heavy Duty Slip On Stop Collar

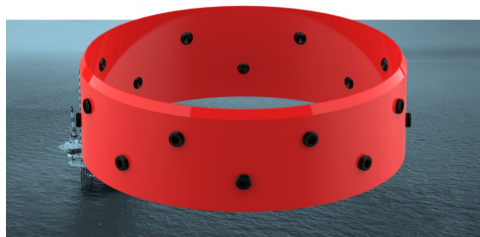
The HDSO is a high performance holding device able to withstand high axial forces in challenging well conditions. Made from the same steel as Centek heavy duty centralizers

- High holding force
- 2 offset rows of M12 socket set screws
- Fitment tested to up to 50 lb-ft torque

Key Information and ratings

Sizing from 4 1/2" to 24"

Designed for use in challenging wellbores



HINGED STOP COLLARS



OOSH

Hinged Stop Collar

The OOSH is a high strength stop collar developed for use in challenging wells with the same integrated hinge technology as the S2 Hinged bow spring centralizer.

- Utilizes a low profile, twisted hinge design for quick installation
- Can withstand high axial forces, making it suitable for demanding well conditions

Key Information and ratings

Sizing from 5 1/2" to 24"

Designed for use with S2 Hinged



HDSH

Heavy Duty, Hinged Stop Collar

Key Information and ratings

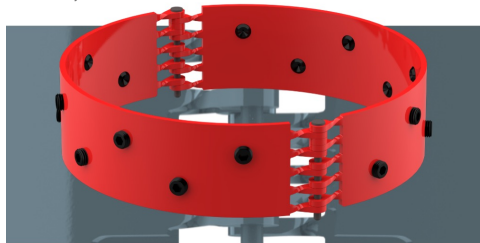
Sizing from 13 5/8" to 24"

Designed for use with S2 Hinged



Each HDSH stop collar is made from the same patented, heat treated, steel as our S2-HD centralizers. This ensures that the HDSH can withstand high axial forces, making it suitable for demanding well conditions.

- Premium, high holding force, heavy duty hinged stop collar
- No yield around thread effective diameter





Centek Ltd

Station View, Forde Road
Brunel Industrial Estate
Newton Abbot, Devon TQ12
4AE

T +44 (0)1626 337636

F +44 (0)1626 353278

W centekgroup.com

E sales@centekgroup.com

Centek Inc

5500 S.W. 36th Street
Oklahoma City
OK 73179

T +1 405 219 3200

Andres Gonzalez

Regional Sales Manager - Caribbean

M. +1 567 370 8844

E.

andres.gonzalez@centekgroup.com

W. centekgroup.com

Lorena Hernandez

Regional Sales Manager - Latin America &
Mexico

M. +57 (311) 811-1052

E. lorena.hernandez@centekgroup.com

W. centekgroup.com



Excellence to the
Core